

History

The Japanese Guesthouse on the Siwei St., West District was constructed in 1938 (the 13th year of Showa Period). It affiliates to Local Tax Bureau of Taichung City Government. It's location is near Taichung City Hall and Taichung City Office. The area was planned to be the administrative center of Taichung during the Japanese Governance Period.

"The Japanese Guesthouse at No.1, Siwei st." was registered as a historic building in 2016.

The location, Saiwaicho 4-chome according to the Japanese administrative division, was chosen to build a number of dormitories to satisfy the need of accommodation when a lot of Japanese officials arrived the city. Therefore, Saiwaicho was designated as the "official dormitory block" in the past.

After the World War II, it was a dormitory for single employees of Taichung County Revenue Service but later for the employees with family as well.



Architecture

The historic building is a representation of few survived Japanese and Western Eclectic Architecture in Taichung urban area.

The structure is a double-storey, weatherboard-clad wooden building in the shape of "U".

The axis of the building goes from the entrance doorway to atrium, which forms the space in a asymmetrical manner.

The interior rooms are connected by the "U" shaped corridor.

The interior space both on the ground and second floors, a staircase installed for ascending to the second floor, is mainly used for daily life.

The slidable shoji doors along the corridor are one of the architectural elements commonly found in Japanese-style building.

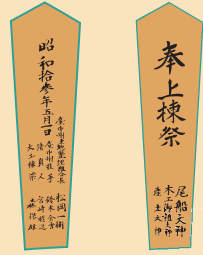
Cultural Value

The Japanese and Western Eclectic Style at No.1 Siwei Street represents the features of the wooden dormitory construction techniques of the time in Taichung district.

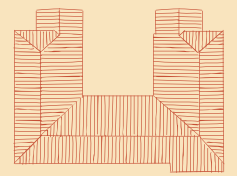
It also transformed the official dormitory architecture and made it different from the formatted official dormitories during the period from late Japanese Governance to the earlypost-war years.

The two-storey building which was especially rare was specific for single employees temporary dwelling in a short period of time.

Manahuda (棟札)

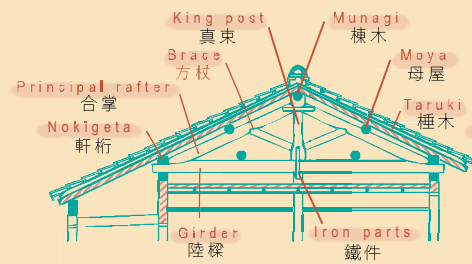


Roof Plan

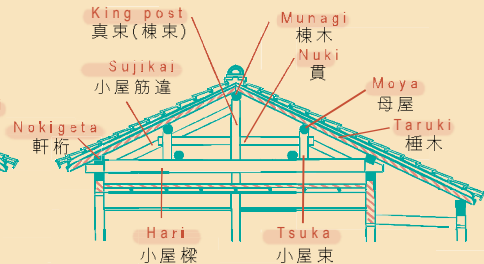


"U" shaped hipped roof

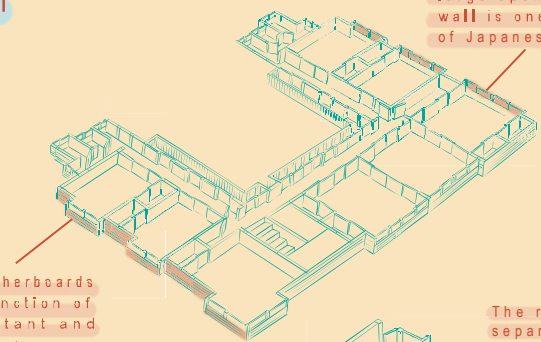
King post truss



Tukadate Koyagumi

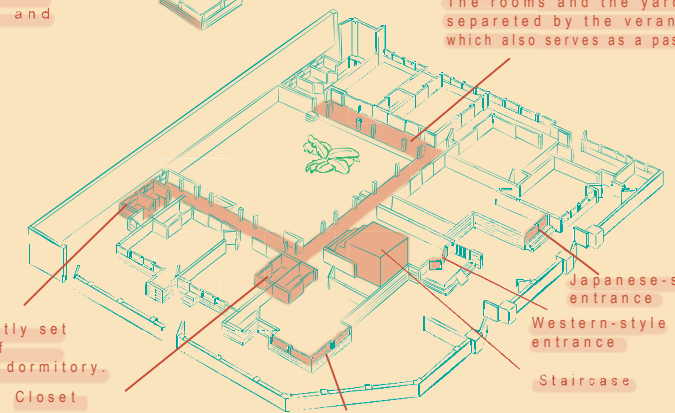


2F Plan



Two-storey high. Each room with large open windows on the outer wall is one of the characteristics of Japanese buildings.

1F Plan



Cladded Weatherboards serve the function of water-resistant and heat insulation.

The rooms and the yard are separated by the veranda which also serves as a passage.

Toilet
Toilets are mostly set in the corner of Japanese-style dormitory.

Closet
Closets are storage space for sundries or bedding.

"L" shaped windows on both the first and second floors make the corners as the best spots with the most of daylight and for the view from the windows.

西區四維街 散步地圖

English

Town

Central District

East District

West District

South District

North District

Beitun District

Xitun District

Nantun District

Liuchuan River

Minguan Rd.

Minsheng Rd.

Siwei St.

Legun St.

Daming St.

Zizhi St.

Section 1, Sanmin Rd.

Linsen Rd.

Guihe St.

Zhaoyang St.

Gongguan Rd.

Section 1, Ziyou Rd.

Jianguo Rd.

Jiguang St.
Luchuan West St.



Historic Building
Taichung Museum of literature
(The Police Dormitory in Japanese Governance)



Historic Building
Taichung Police Administration Building



National Monument
Taichung region City Hall



City Monument
Qing Dynasty Examination shelter

Historic Building
Datun County Office



Historic Building
Taichung City Office



Historic Building
The Japanese Guesthouse on the Siwei St., West District

Taichung Municipal Taichung Girls' Senior High School



City Monument
CBH dormitory on Jiguang St.



Historic Building
The Old Official Dormitories of Taichung District Court



Historic Building
Taichung Budokan Hall of Keimusho



City Monument
Taichung Keimusho Bathhouse



City Monument
Wardens' House of Taichung Keimusho

Taichung Municipal Kuang-Ming Junior High School

Taichung Municipal Da-Tung Elementary School

How to get there

- From Taichung City Office
Go down Shifu Road.
Only five-minute walk.
- From Taichung Museum of Literature
Go down Siwei Street.
Only ten-minute walk.
- From Taichung Budokan Hall of Keimusho
Go down Fuhou Street.
Only ten-minute walk.

Scan for more information

